

PLEASE KEEP ME WITH YOUR PROOF OF PURCHASE FOR FUTURE REEERENCE.






**ATTENTION:**

1. Please read these instructions carefully before assembly.
2. Aluminium is soft metal and over tightening may strip thread or break the part.
3. **DO NOT** use power tools however you will require an allen key to assemble product.
4. Please allow 30 minutes for assembly.
5. Although assembly only requires 1 person it is advised that a second person be present to help turn the frame over and into position when fully assembled.

**ASSEMBLY STEPS:**

1. Unpack the parts and put them on the soft clean surface.
2. Insert Legs (C) to Frame (A).
3. Turn over the aluminum frame and put Cushion (B) on it.
4. Installation complete.

**For more information regarding maintenance of your furniture and to register your warranty, please visit [www.hartmanuk.com](http://www.hartmanuk.com)**

Component's					Fixings				
Parts List	Parts Picture	Description	QTY	Part no	Parts list	Parts Picture	Description	QTY	Part no.
A		Frame	1	69831199A	C		Legs	6	69831199C
B		Cushion	1	69831199B					

**NB:** once removing the mattress from the vacuum packaging, please allow time for the creases to fade and the cushions to plump to shape. Place in direct sunlight, or for the immediate results, we recommend to lightly steam the mattress with a steamer.

For replacement or lost spare parts please go to <http://faq.hartmanuk.co.uk/spares/>  
**Should you have any queries about your furniture your first point of contact should be the retailer from whom you purchased your product.**

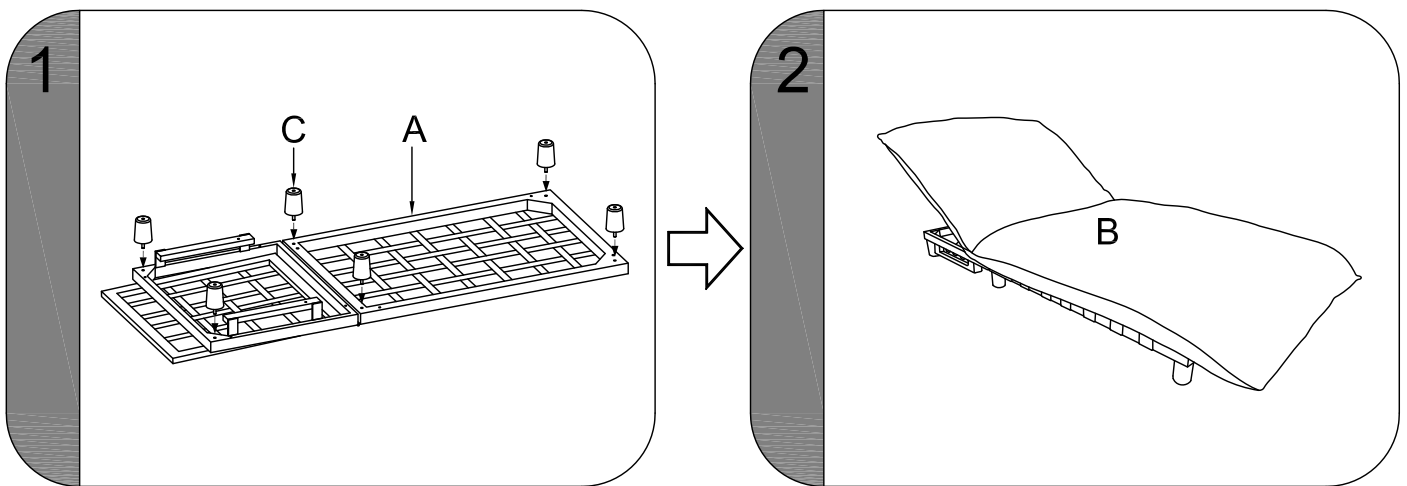
PLEASE KEEP ME WITH YOUR PROOF OF PURCHASE FOR FUTURE REEERENCE.



## ASSEMBLY INSTRUCTIONS

### Riviera Futon Lounger

(69381199)



For replacement or lost spare parts please go to <http://faq.hartmanuk.co.uk/spares/>

**Should you have any queries about your furniture your first point of contact should be the retailer from whom you purchased your product.**